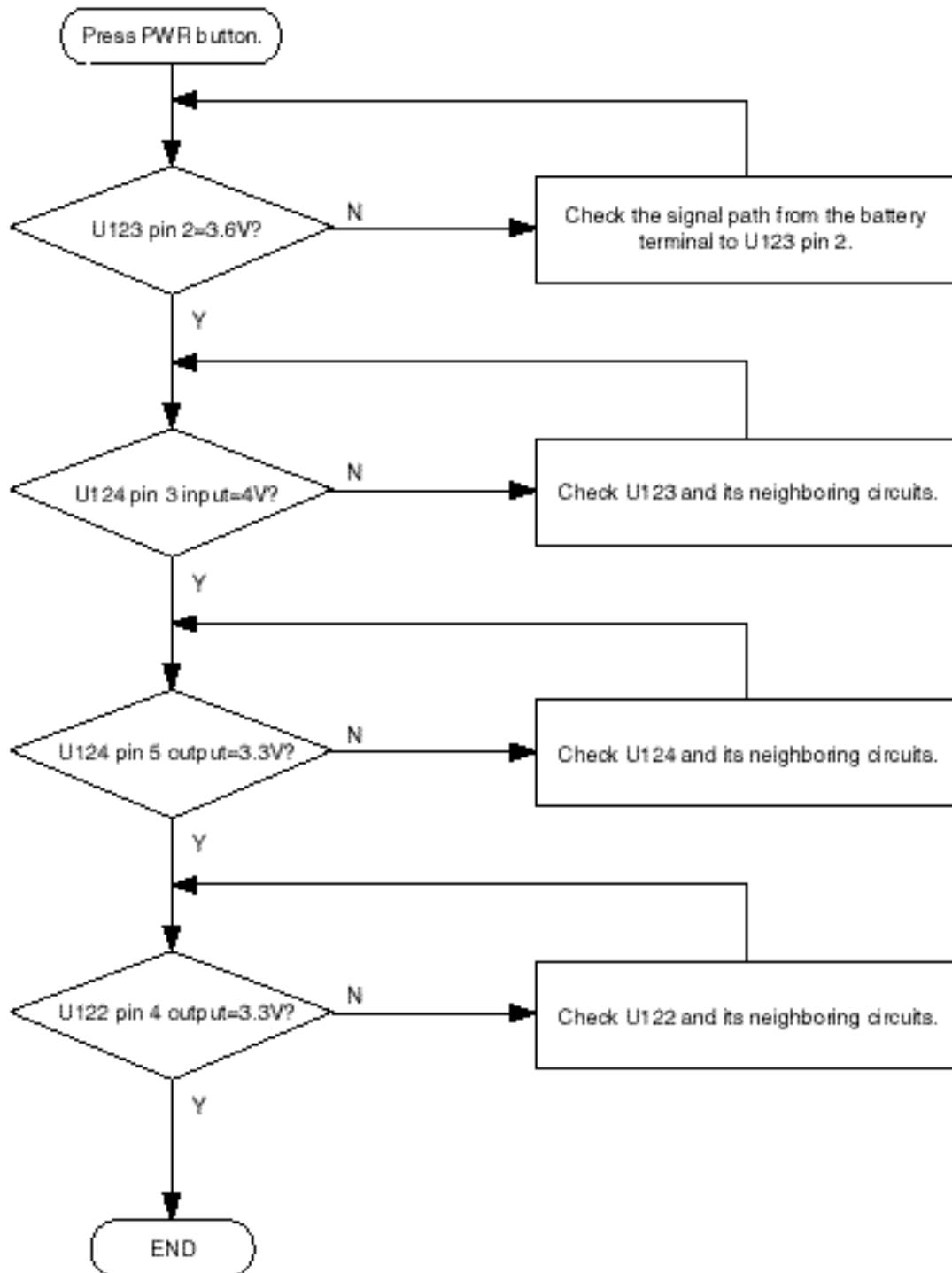


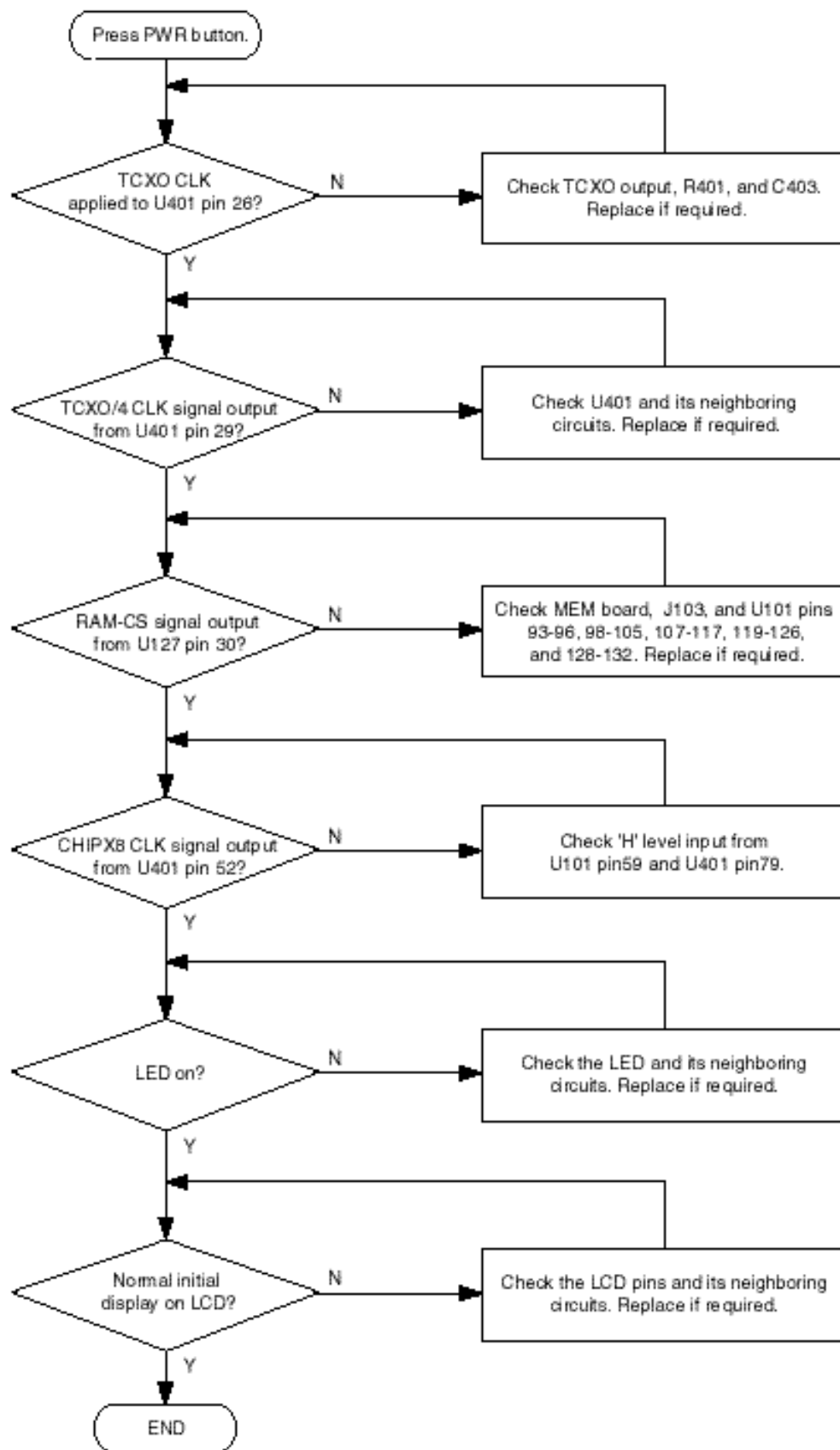
# 8. Troubleshooting

## 8-1 Logic Section

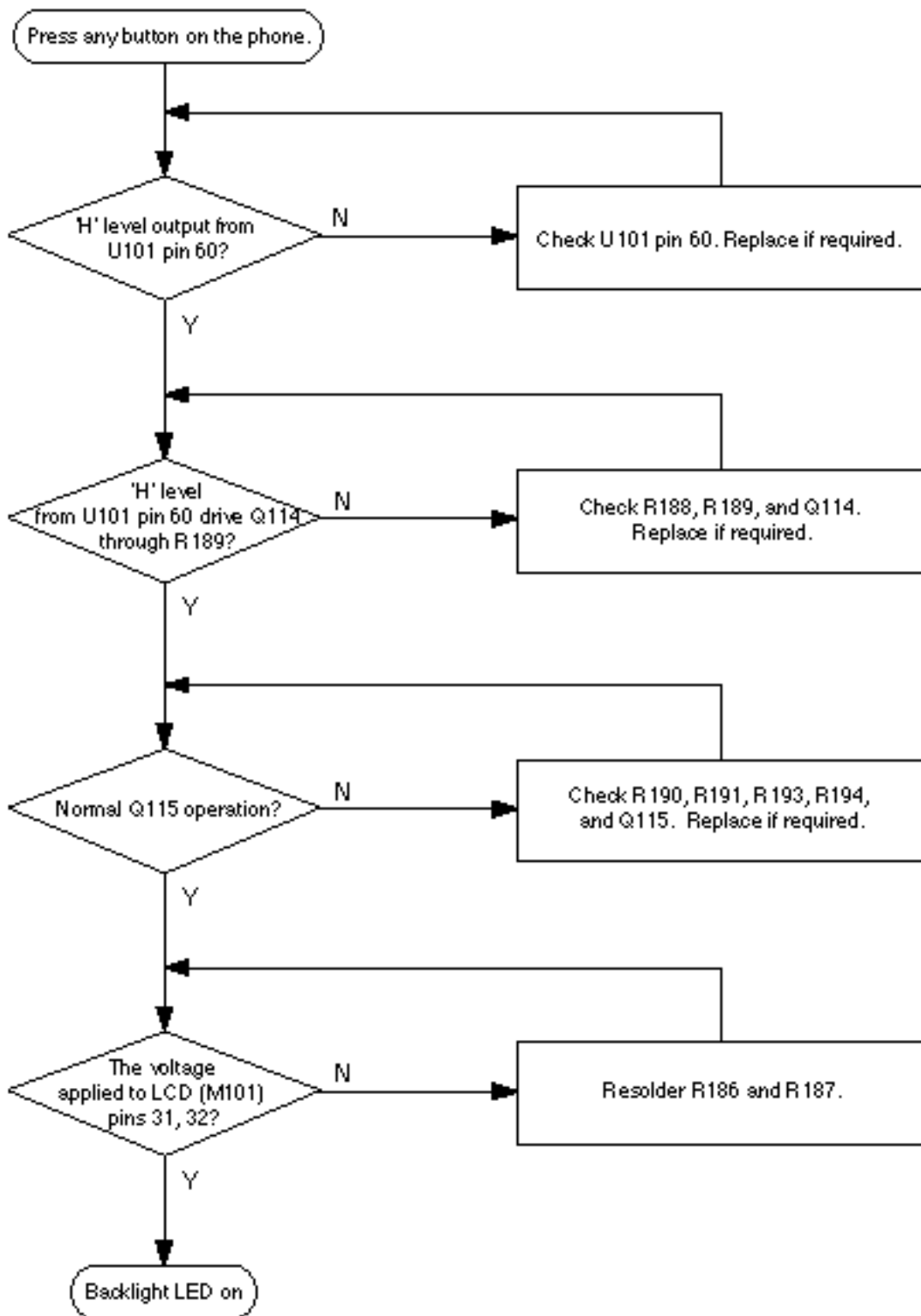
### 8-1-1 No Power



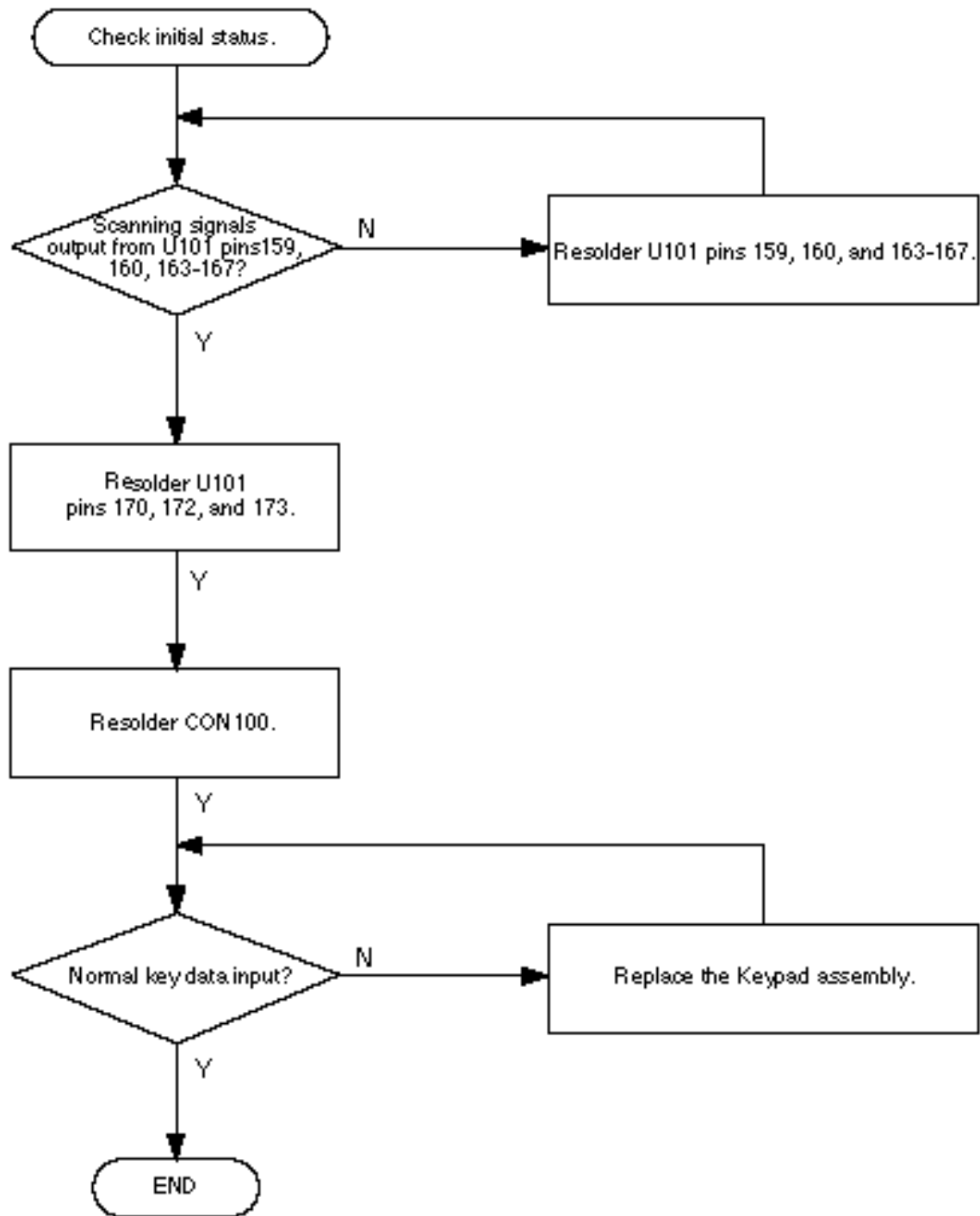
### 8-1-2 Abnormal Initial Operation (Normal +3.3V voltage source)



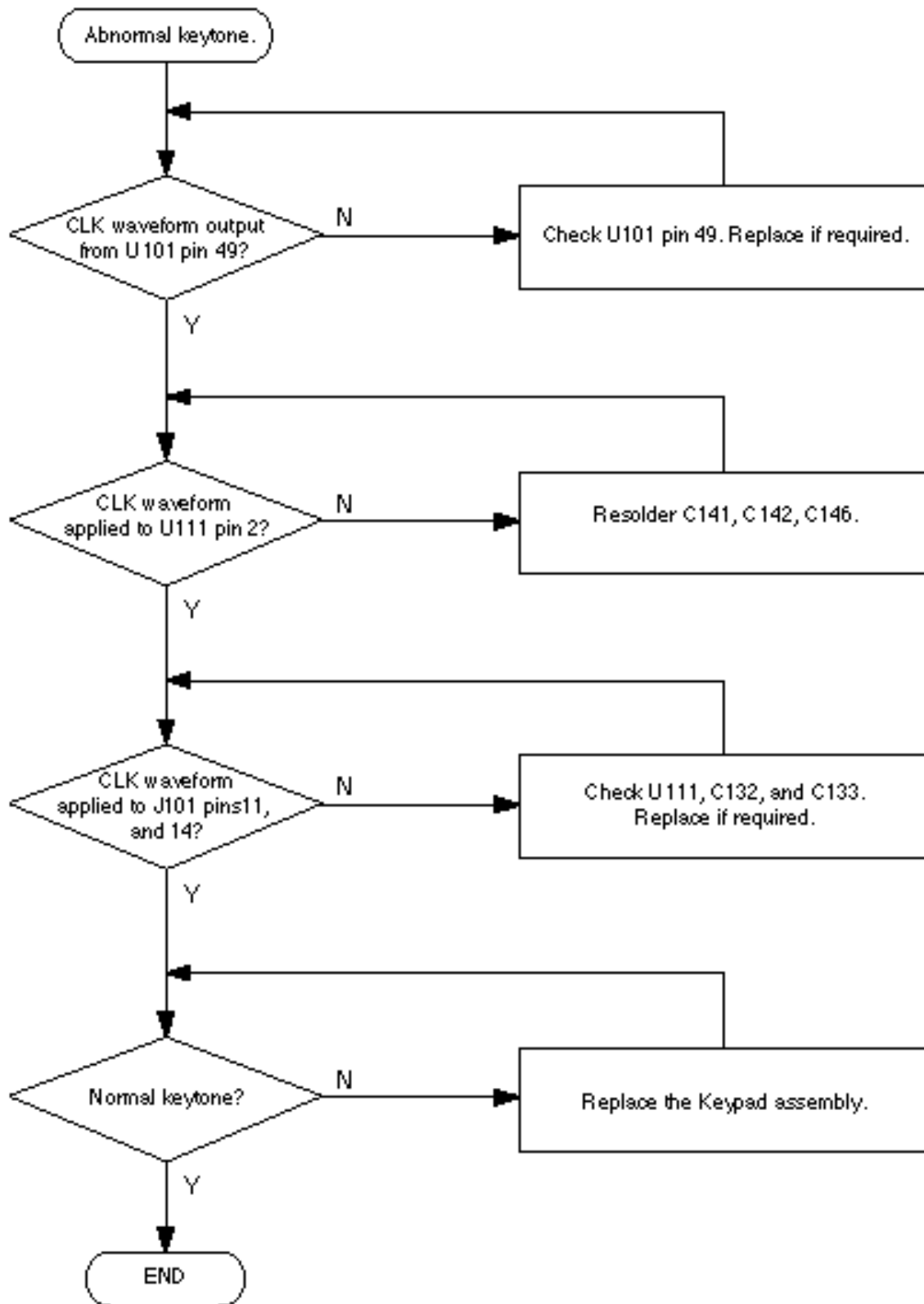
### 8-1-3 Abnormal Backlight Operation



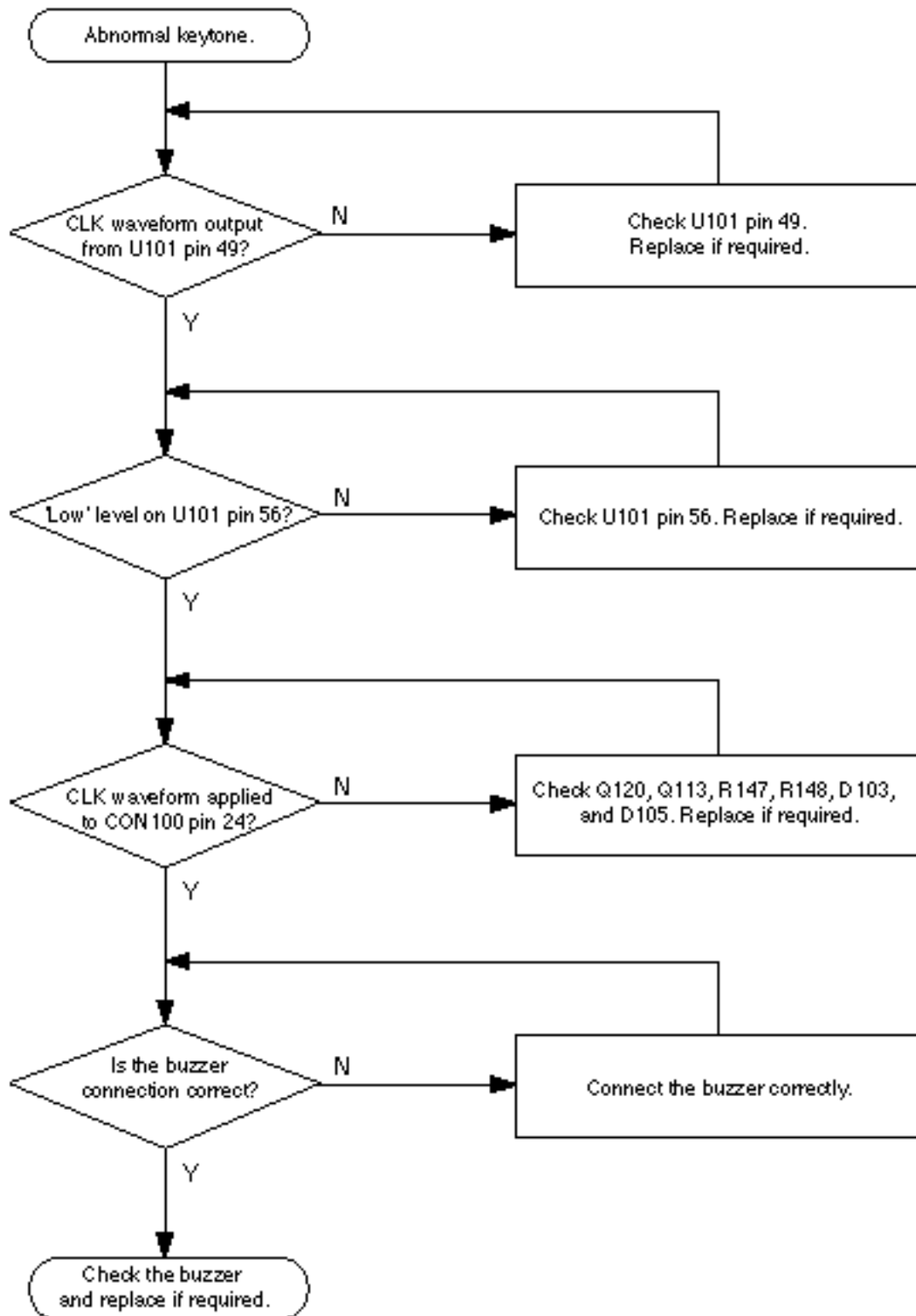
### 8-1-4 Abnormal Key Data Input



### 8-1-5 Abnormal Keytone

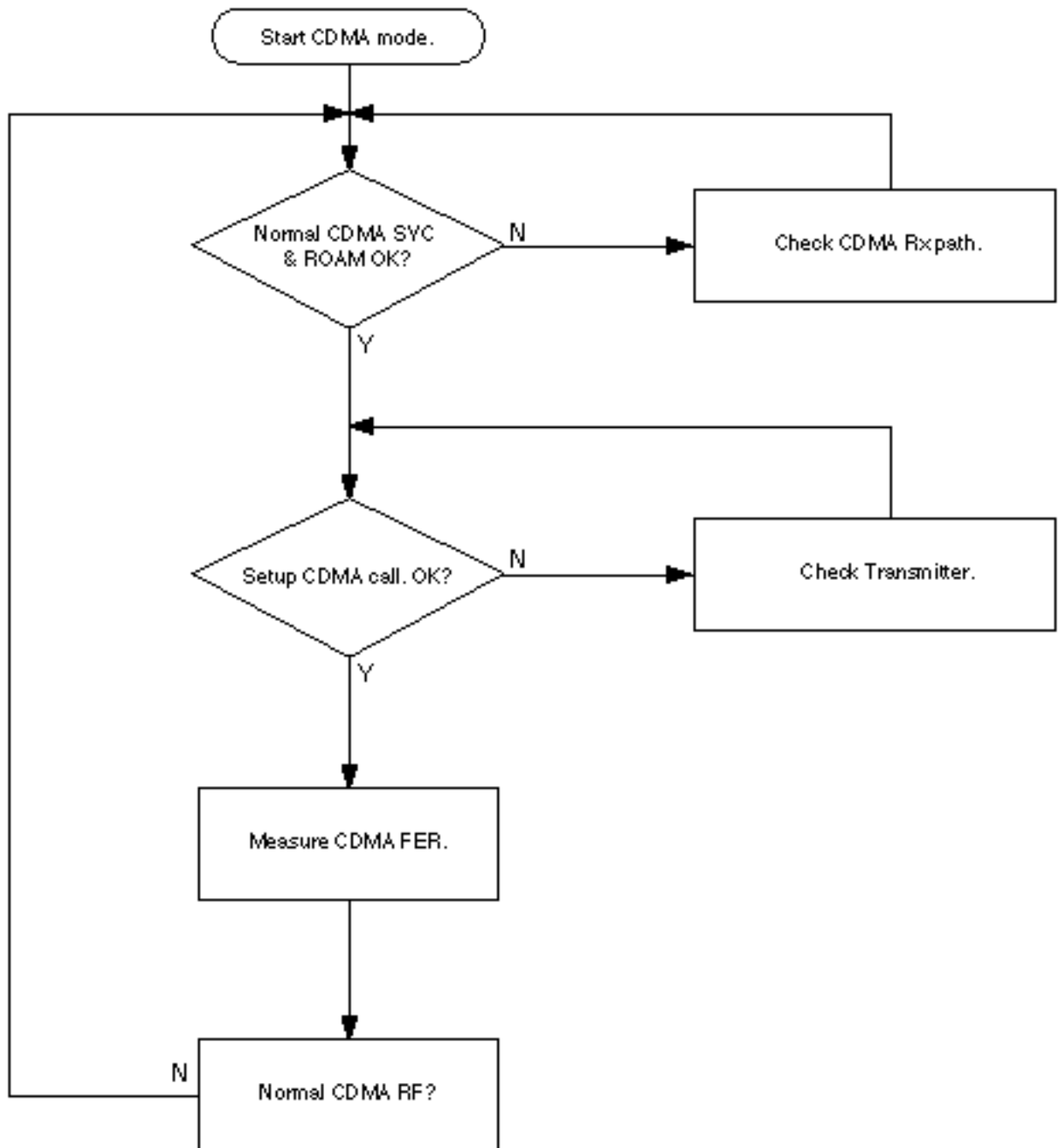


### 8-1-6 Abnormal Alert Tone

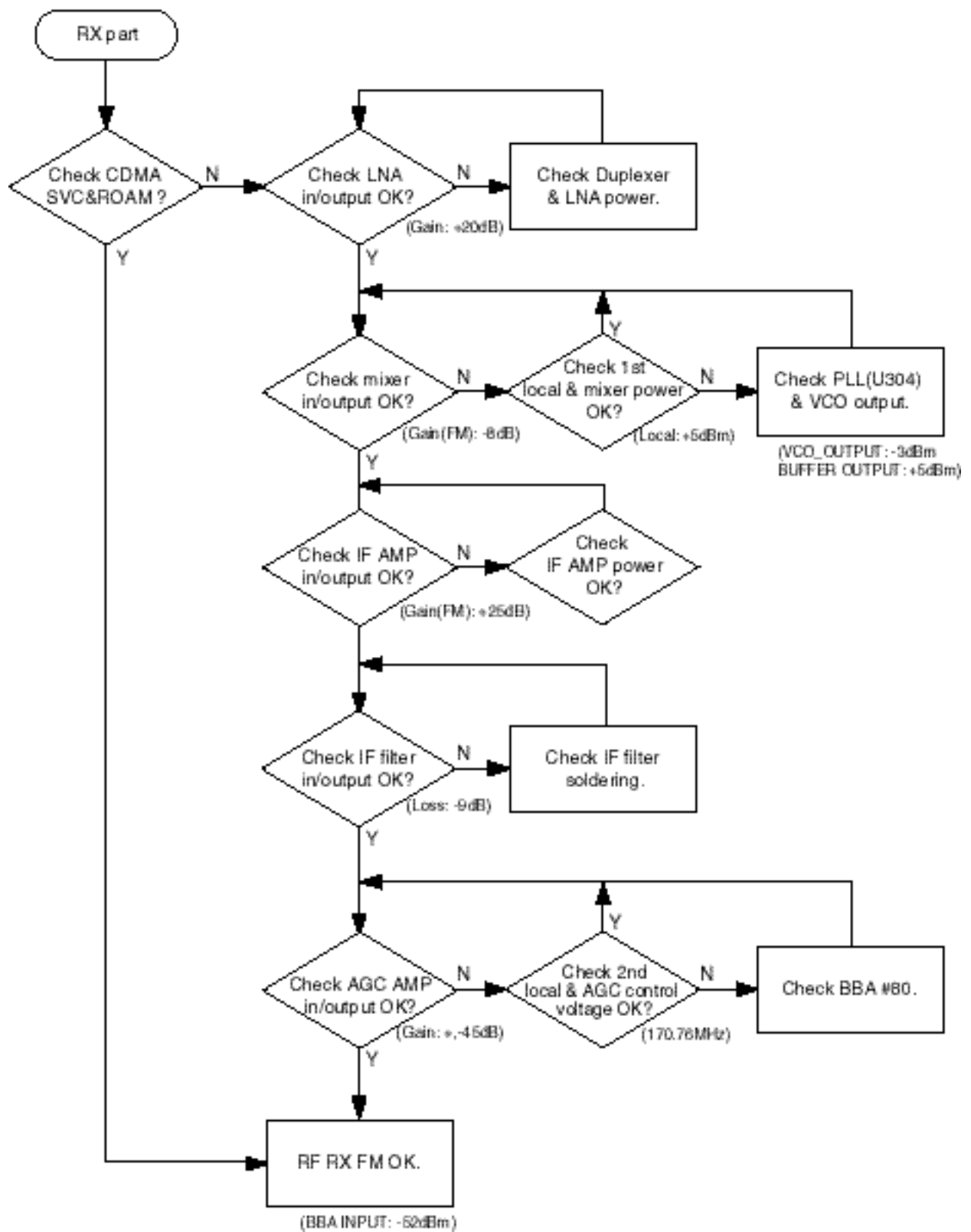


## 8-2 RF Section

### 8-2-1 RF Section Troubleshooting

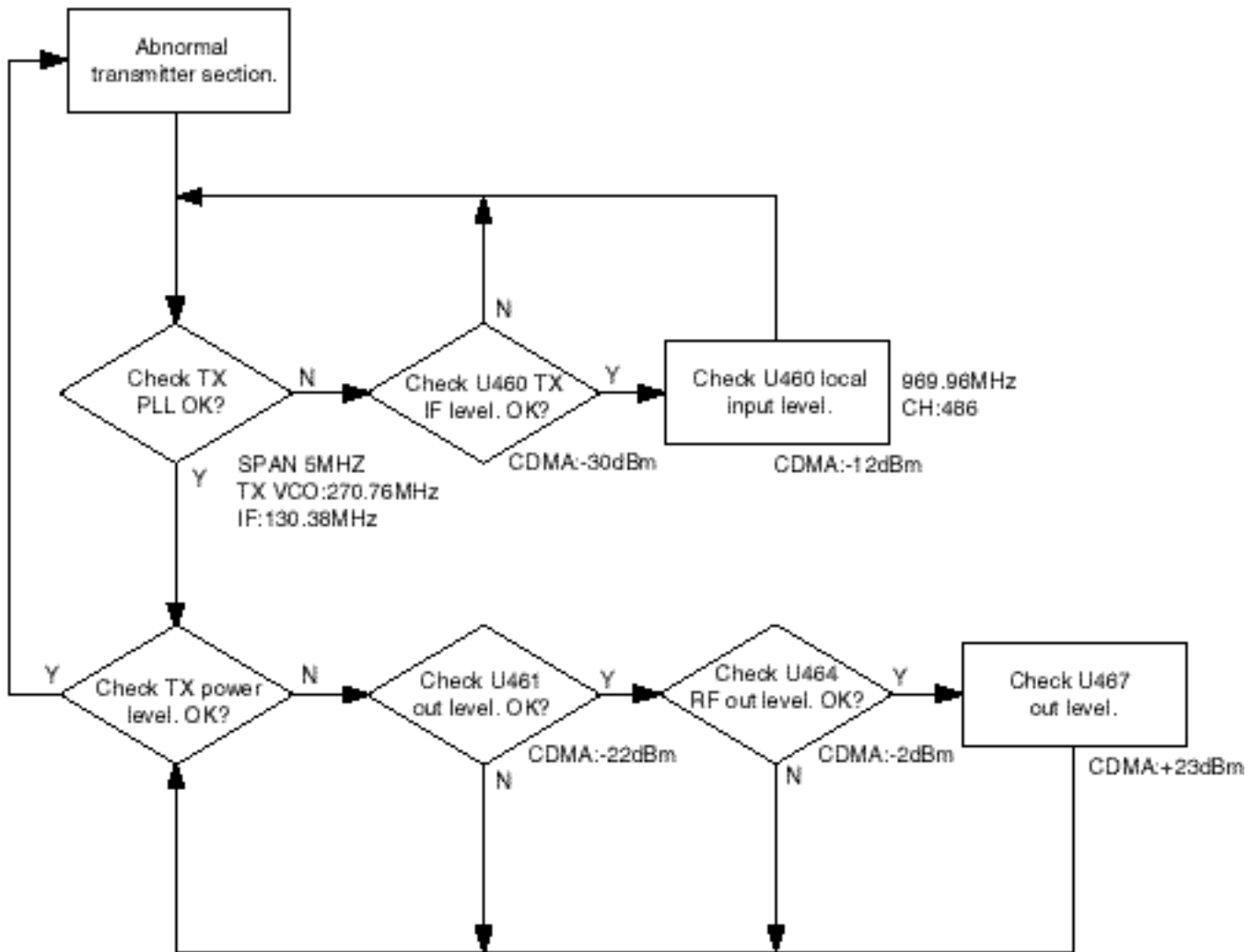


### 8-2-2 Receiver Part



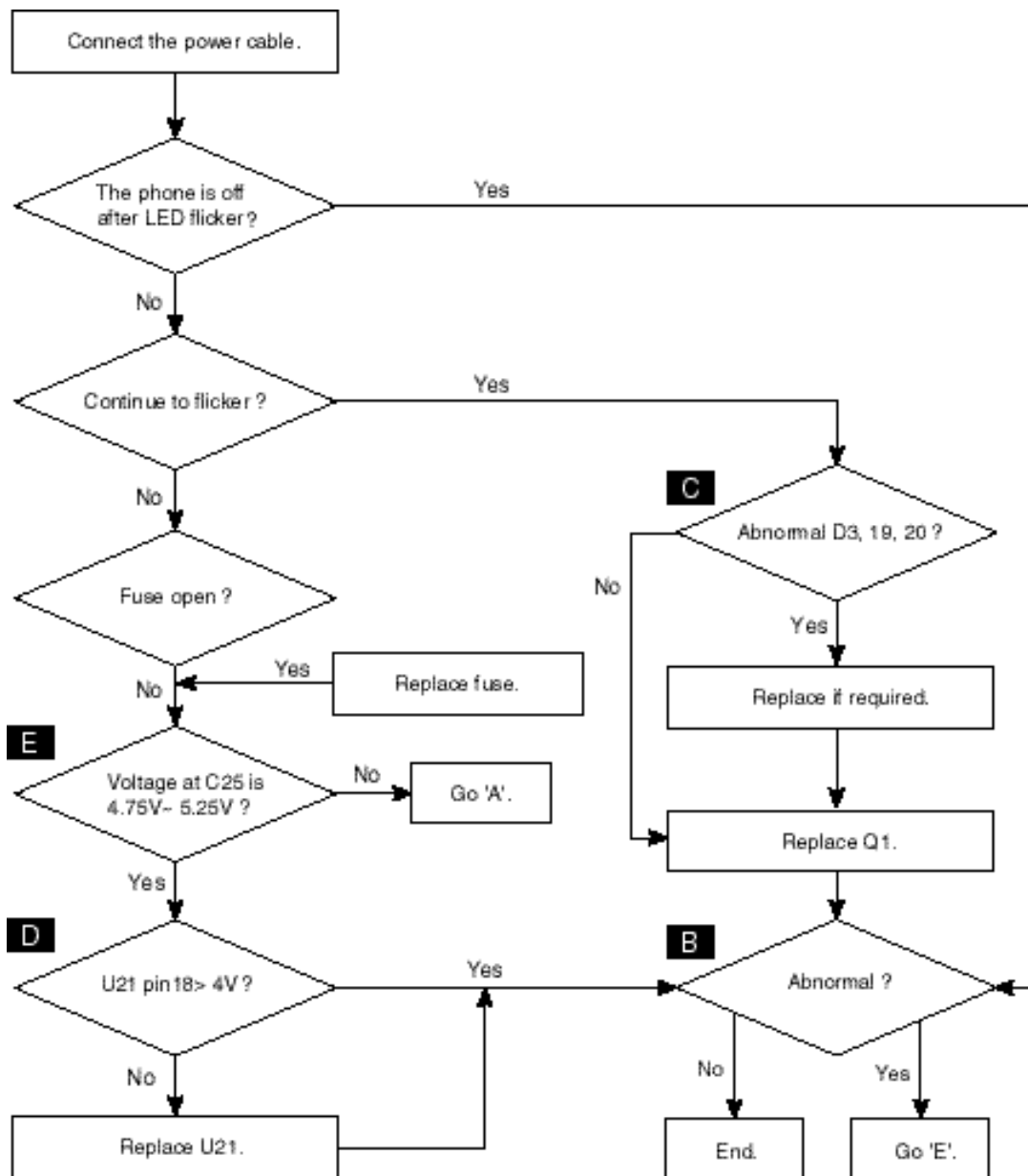


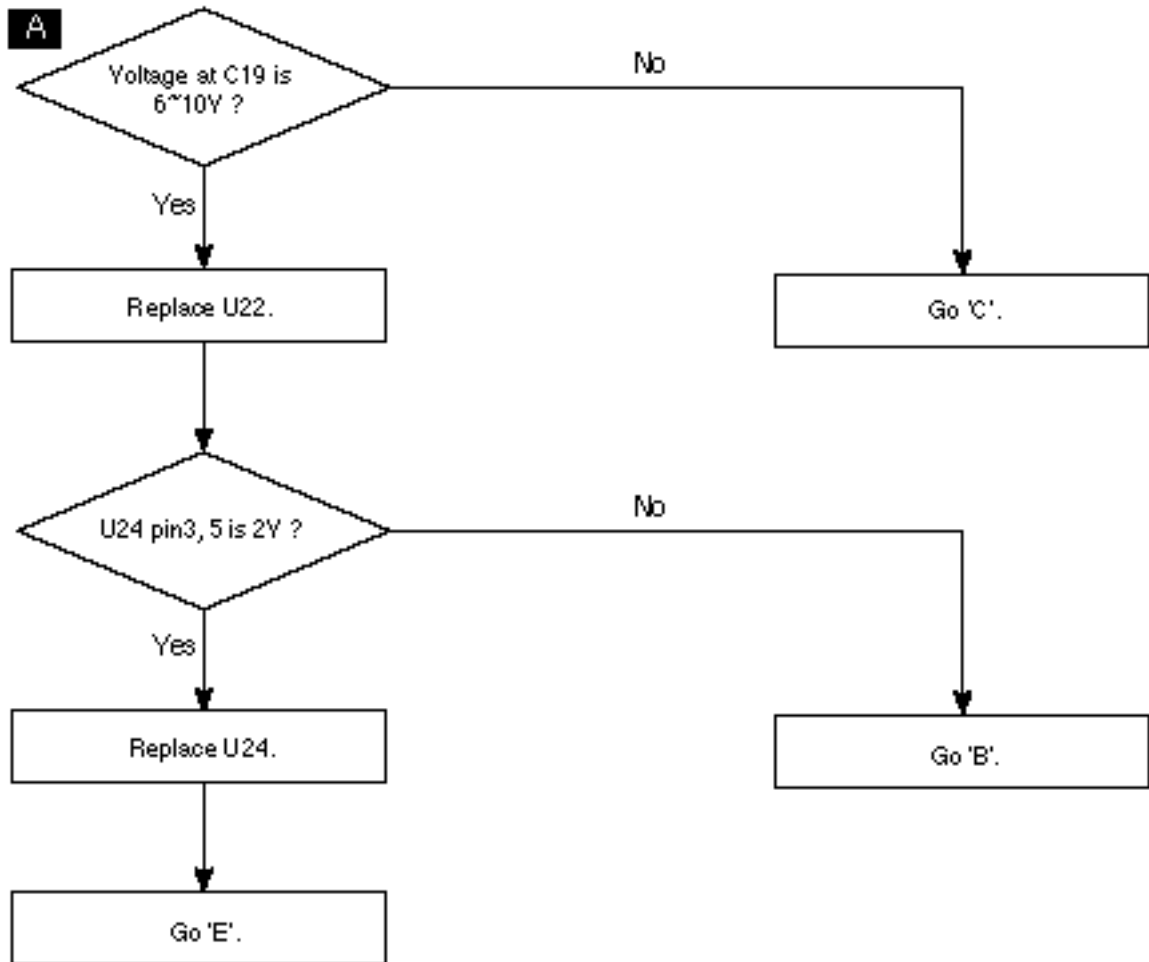
### 8-2-3 Transmitter Part



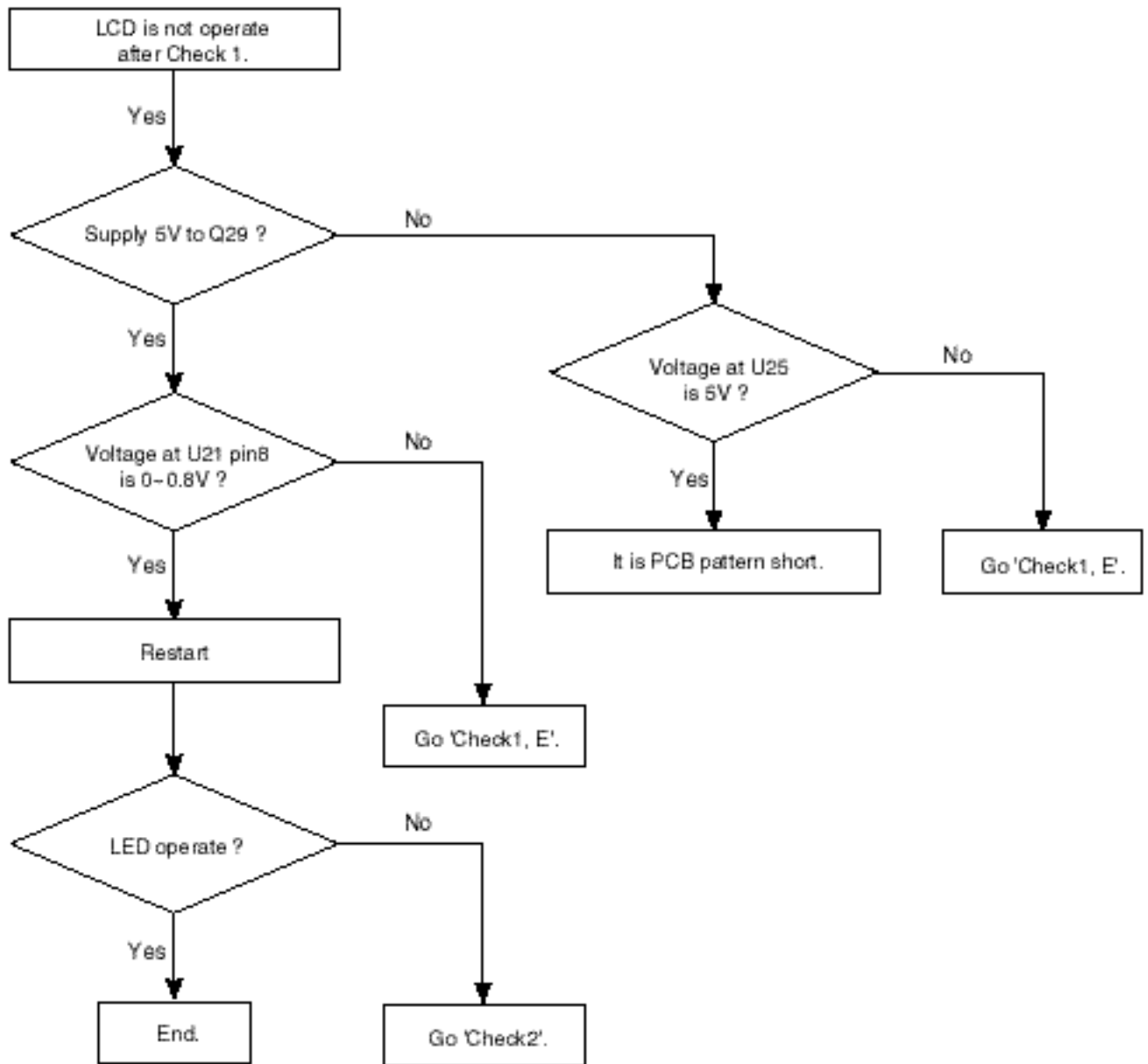
## 8-4 Desk-Top charger

### 8-4-1 Check 1

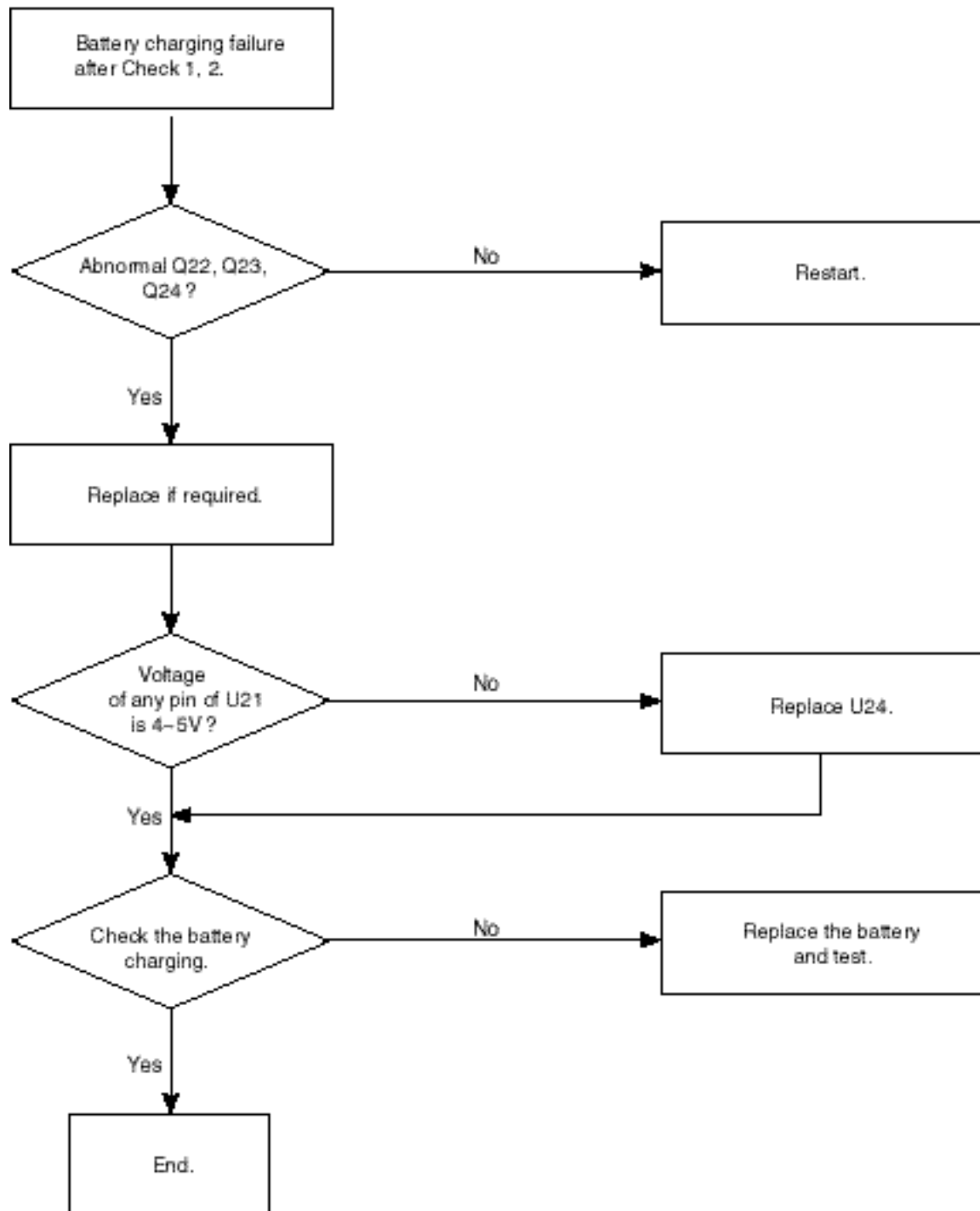




### 8-4-2 Check 2



8-4-3 Check 3



# MEMO